

P1=P2=P3=P4=P5=P6=P7=P8
P9=P10=P13=P15=P17=P20

P11=P18

P12=P14=P16=P19

P21=P23=P25=P26=P29
P31=P33=P35=P40=P44
P43=P53=P54=P55=P56

P22=P27=P33=P35=P42
P43=P46=P51=P52

P24

P26

P39

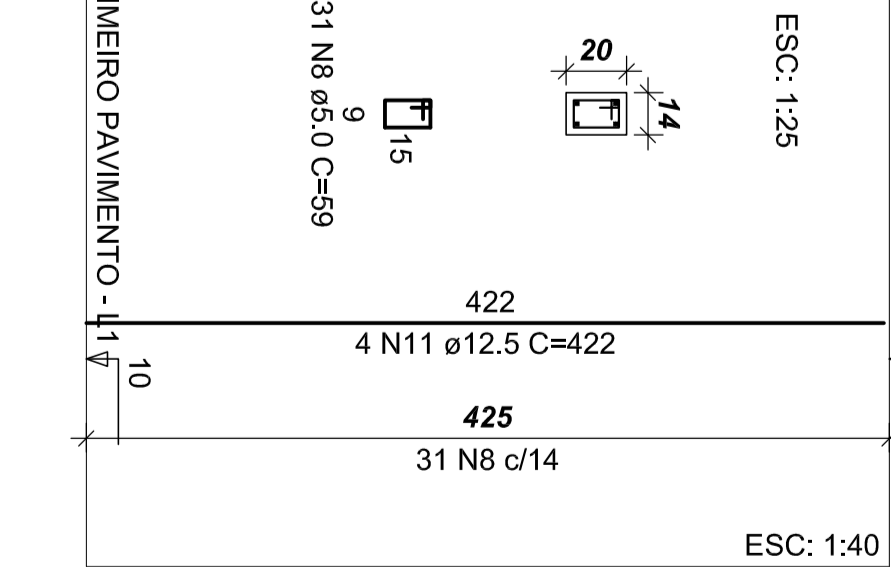
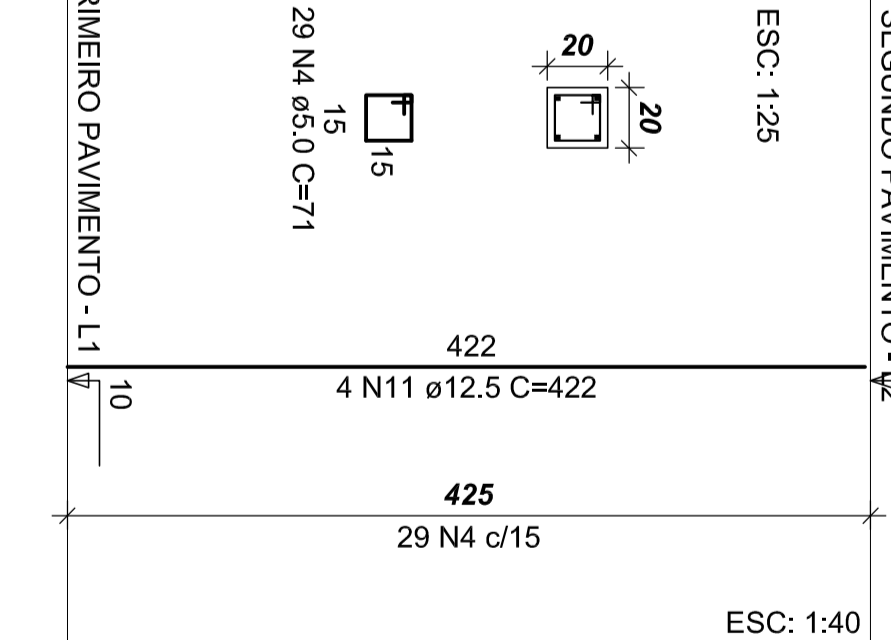
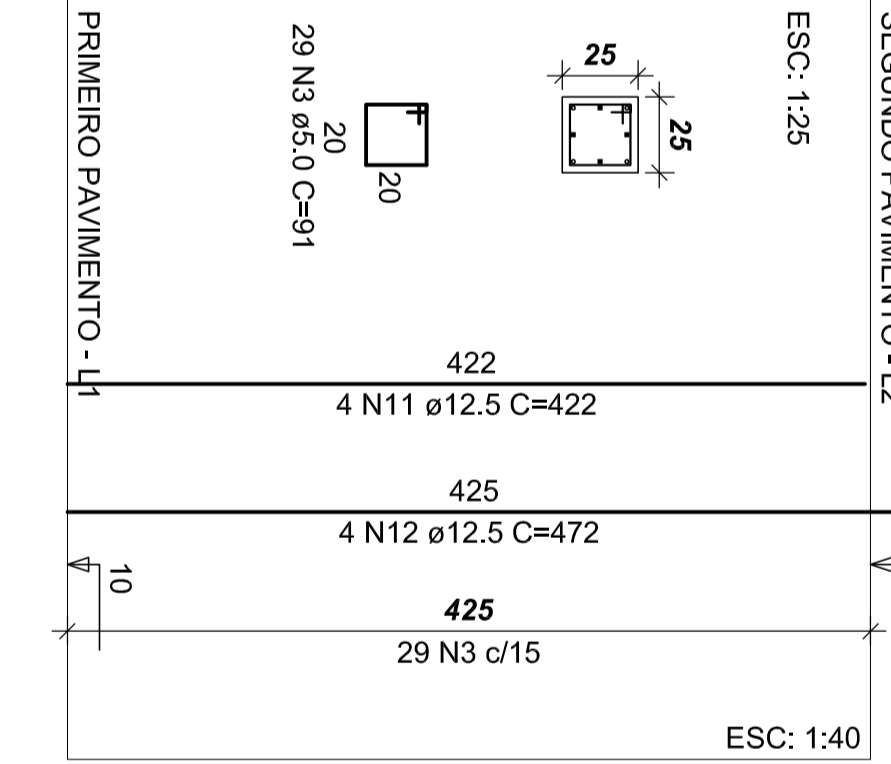
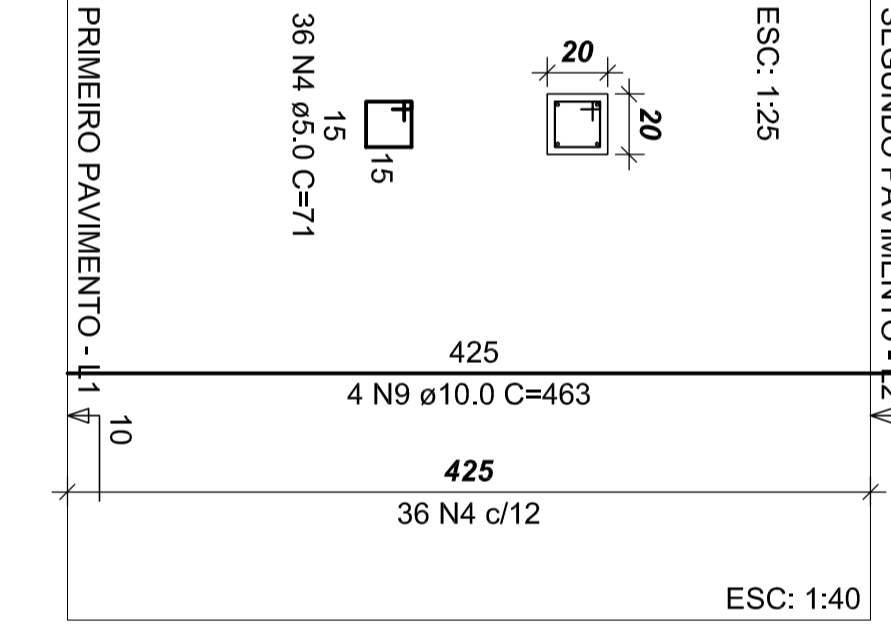
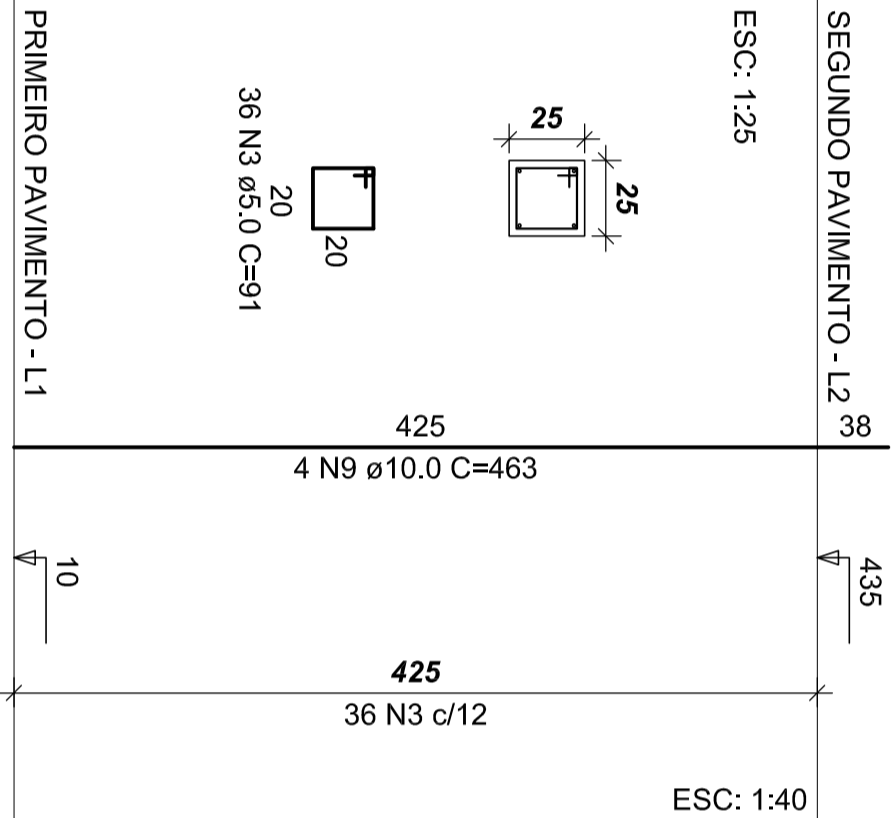
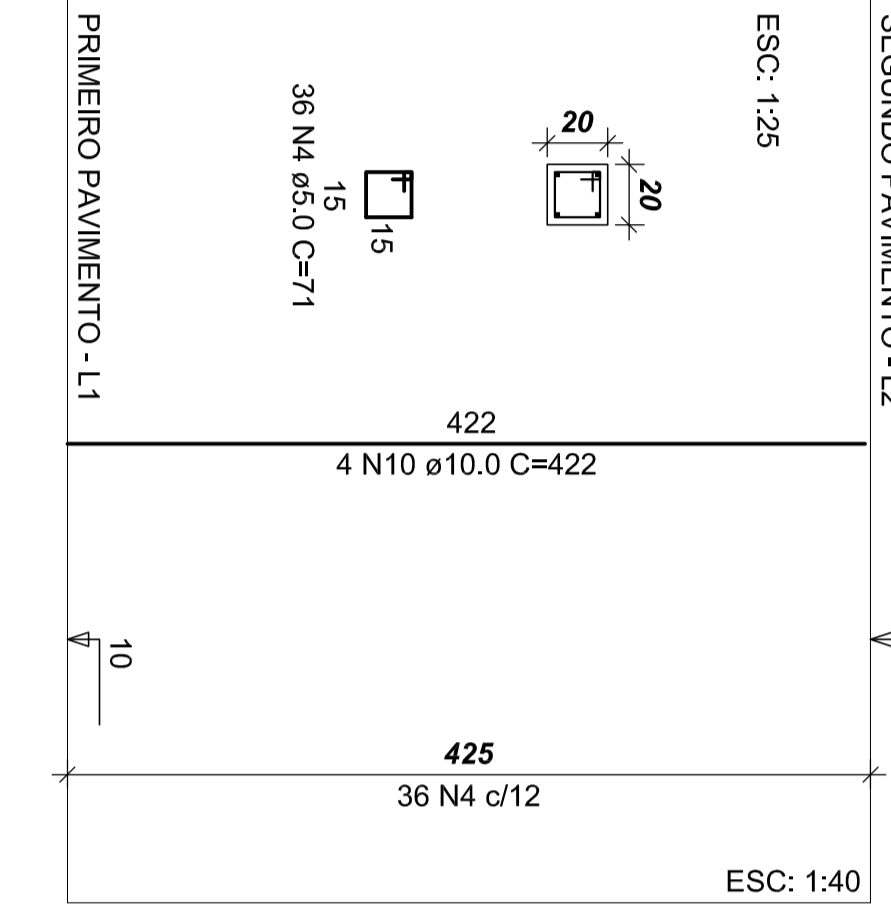
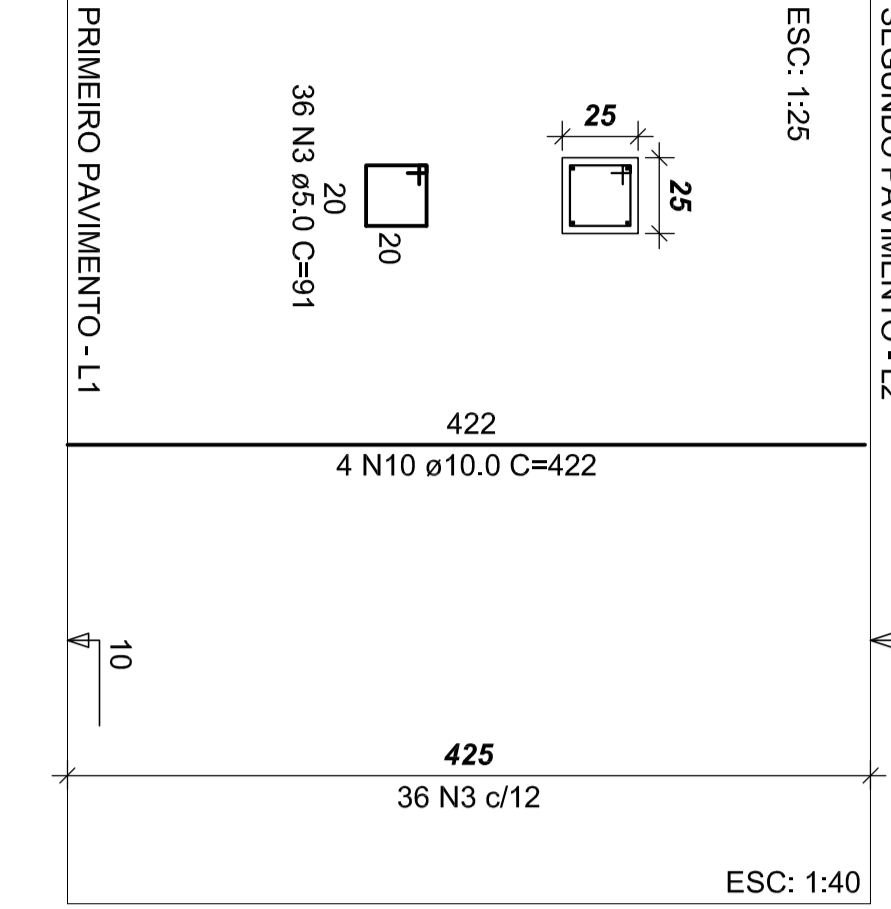
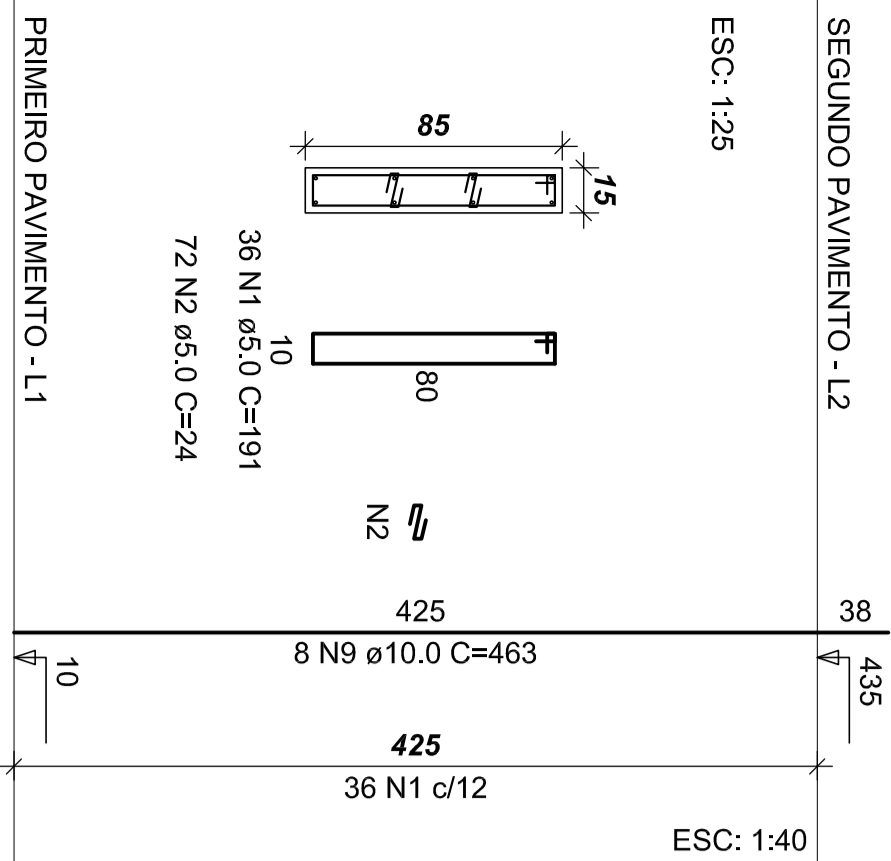
RELATÓRIO DO AÇO
PLANOS DO PRIMEIRO PAVIMENTO
QUE SUPORTAM O SEGUNDO PAVIMENTO

ACO	N	DIAM	Q	UNIT	C.TOTAL
60	2	5,0	1008	194	39682
	3	5,0	722	91	65702
	4	5,0	497	73	36281
	5	5,0	363	53	26249
	6	5,0	263	22	5806
	8	5,0	103	23	2369
	9	10,0	216	463	100038
	10	12,5	26	422	10126
	11	12,5	38	472	17336
	12	12,5	38	472	17336
	13	16,0	4	422	1680

ACO	DIAM	C.TOTAL	PESO+%
CASO	10,0	1152,0	716,4
	12,5	288,5	270,5
CABO	5,0	2411,7	371,3
PESO TOTAL			
CASO		1038,3	

Vol. de concreto total (C-25) = 16,62 m³

Área da forma total = 273,40 m²



P31

P32

P37

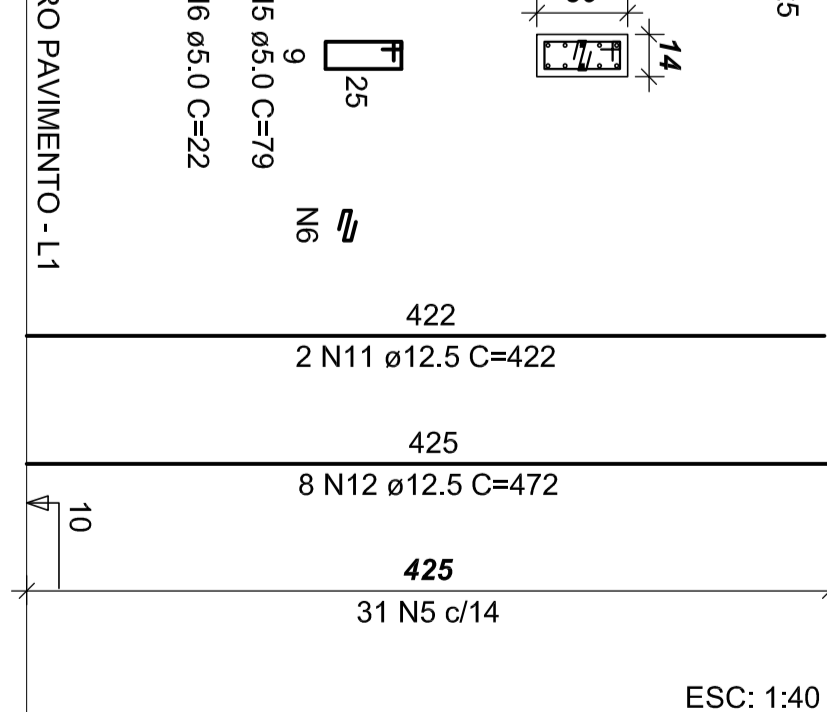
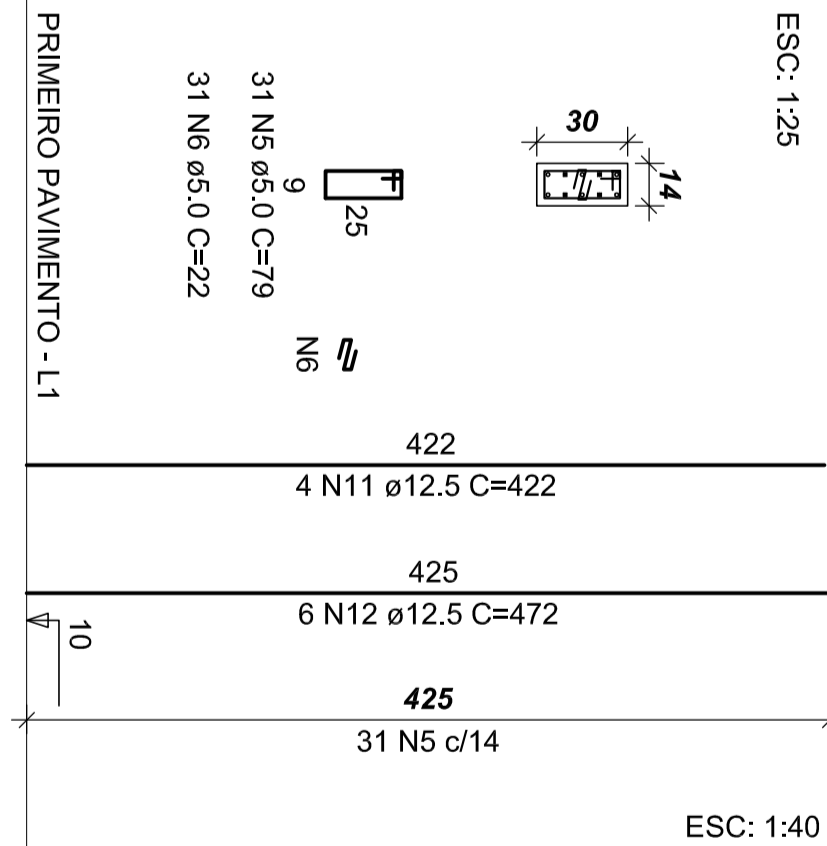
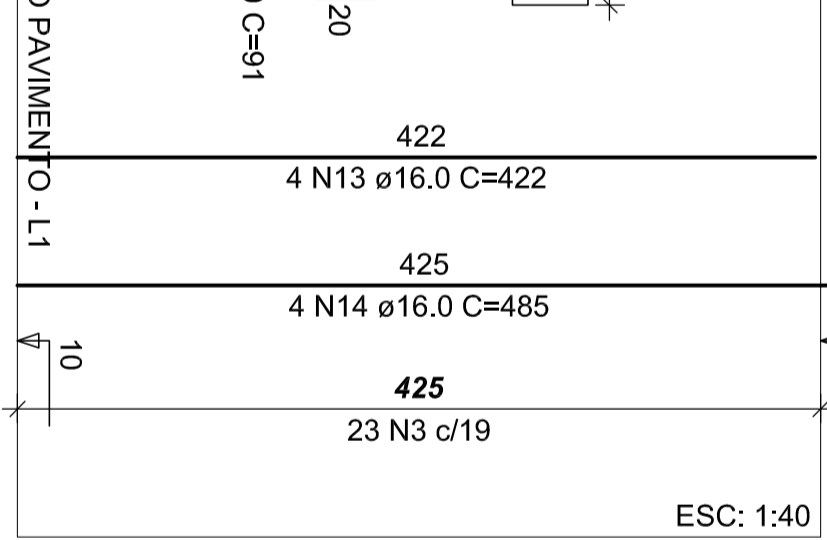
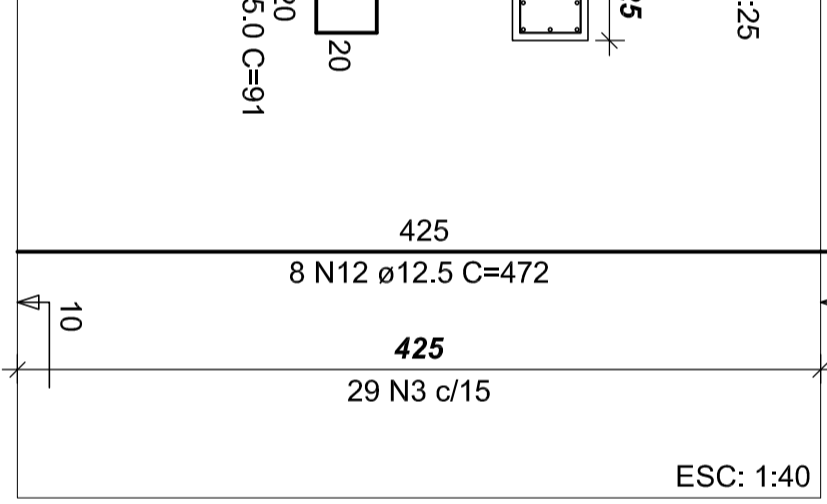
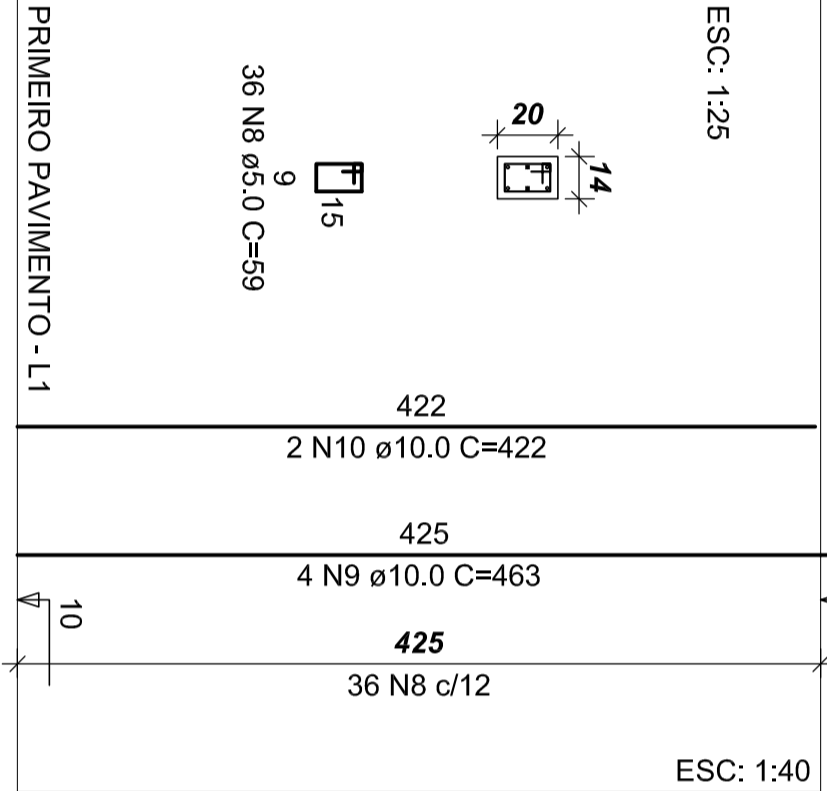
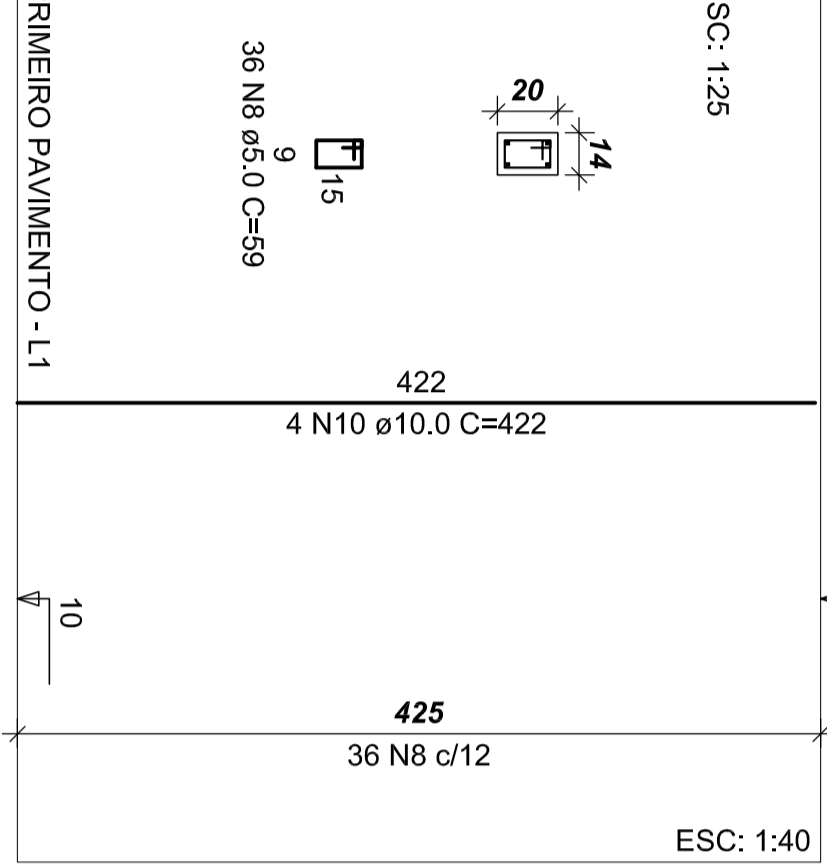
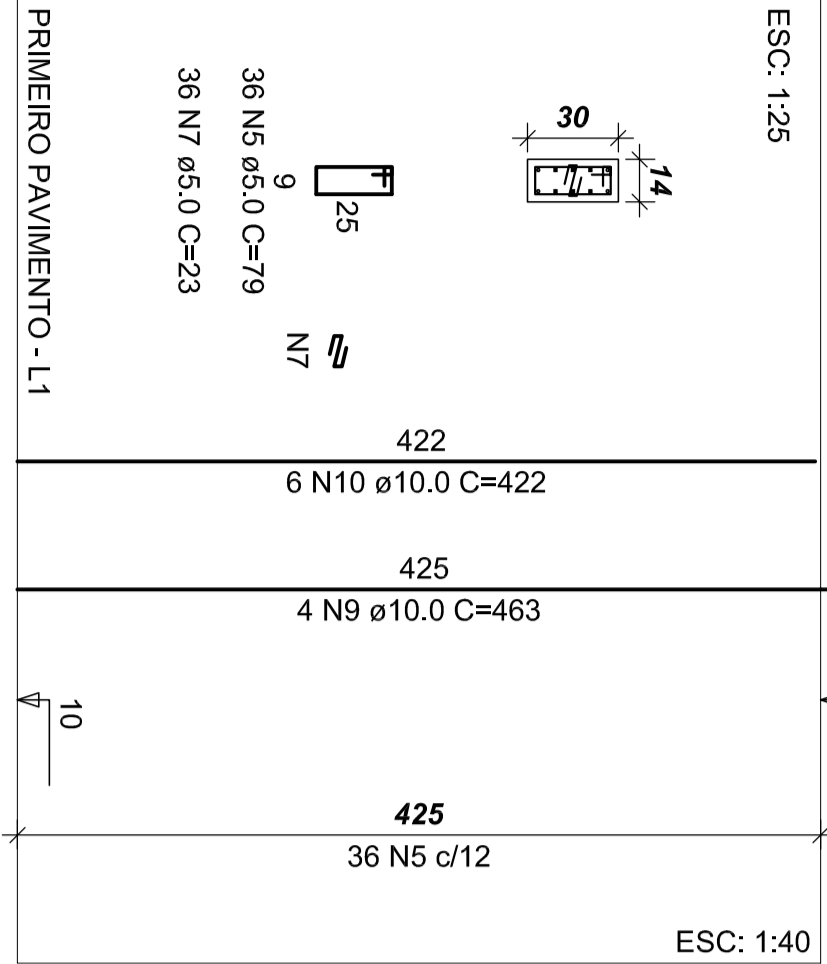
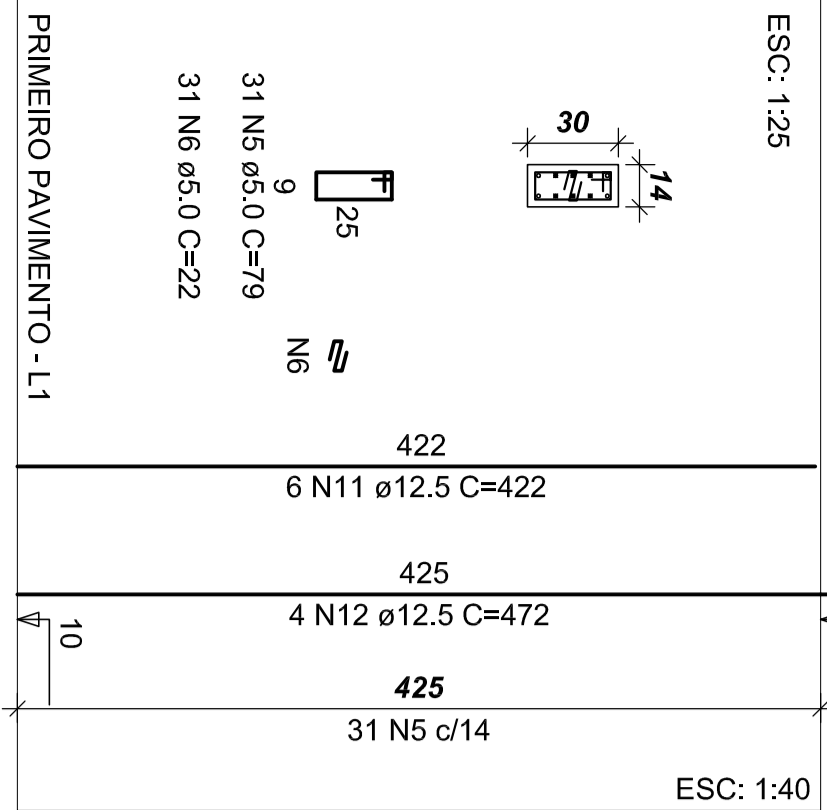
P38

P41=P50

P47

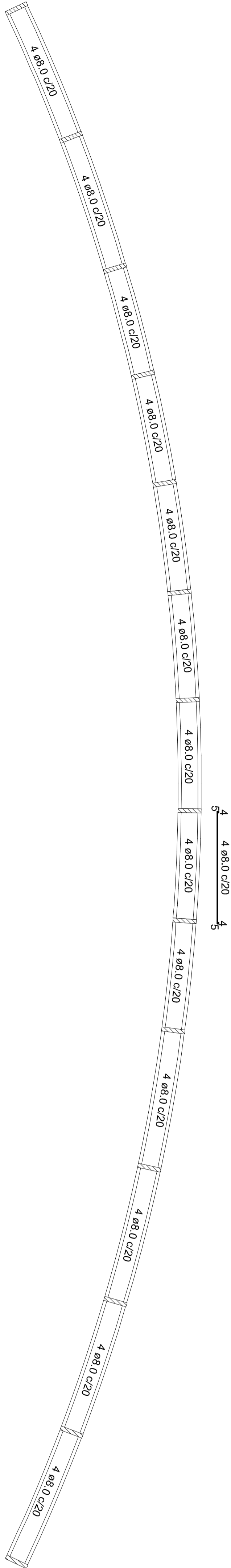
P48

P49



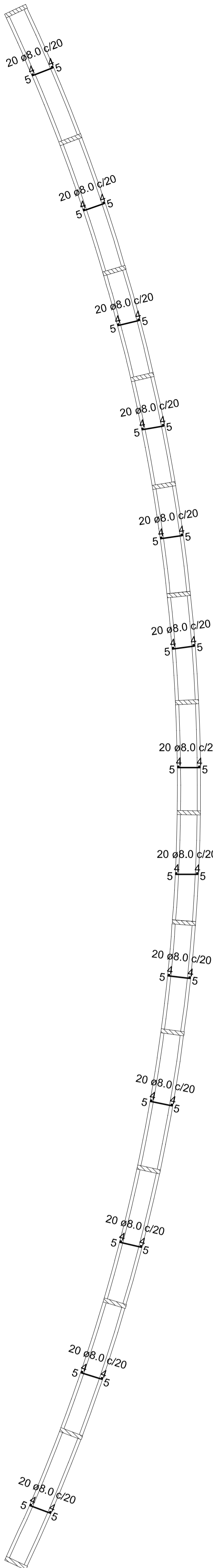
ARMAÇÃO POSITIVA DAS LAJES DO PRIMEIRO PAVIMENTO (EIXO X)

escala 1:100



ARMAÇÃO POSITIVA DAS LAJES DO PRIMEIRO PAVIMENTO (EIXO Y)

escala 1:100



RESUMO DO AÇO

ACO	DIAM	C.TOTAL	PESO+%
CASO	8,0	542,5	214,4
CASO	214,4		

Vol. de concreto total (C-25) = 33,34 m³

Área da forma total = 35,38 m²

PROJETO ESTRUTURAL			
CONFERIR MEDIDAS NA OBRA			
PRÉDIO EAD			
CAMPUS DIAMANTINA			
UFVIM			
PROJETO DE FERRAGEM DOS PILARES DO PRIMEIRO PAVIMENTO			
FERRAGEM DAS LAJES DO PRIMEIRO PAVIMENTO			
CARLOS HENRIQUE DE SOUZA GONÇALVES			
CREA 739620-7			
ESCALA: INDICAÇÃO			
EQUIPE			
VERSÃO	DATA	ANEXO/CONSTRUÇÃO	FOUN
VERSÃO 1	24/03/2013	1:133,46 m²	EST
ARQUIVO: 06/18			